



### Introduction

The [Broadband for Education \(BB4E\) Team](#) encourages Public Schools and Libraries to use this report and related resources when planning broadband upgrades or service renewals this year. The following information is intended to help you:

- ☆ Consider Statewide Price Agreement (SPA) options designed for the competitive mini-quote process
- ☆ Identify and contact local Internet Service Providers (ISPs) to request quotes
- ☆ Use price transparency when planning an upgrade and preparing for price negotiations
- ☆ Utilize [BB4E online resources](#) via hyperlinks
  - Query the NM Broadband Map for newly reported ISP and other data (<https://nmbbmapping.org/mapping/>)
  - Request a free Mini-Quote System account for the E-rate competitive bidding process (<http://www.broadband4education.nm.gov/request-mini-quote-account.aspx>)
  - Download this report for one or more District locations (<http://www.broadband4education.nm.gov/broadband-info-sheets.aspx>)
  - View E-rate Category 1 SPA guidelines to add or change new or existing eligible service locations (<http://www.broadband4education.nm.gov/statewide-price-agreements-for-internet-access-services.aspx>)
  - Review how State Master Contracts, also known as SPAs, work (<http://usac.org/sl/applicants/step02/state-master-contracts.aspx>)
  - View E-rate Category 2 SPA guidelines (<http://www.broadband4education.nm.gov/state-price-agreements-for-cat2-purchases.aspx>)
- ☆ Assess whether or not your educational facility is digital learning ready (<https://futureready.org/>)

### E-rate Category 1 (Internet Access Service) State Price Agreement (SPA) Options

Below you will find the original *monthly quotes* for Internet access services by hub location (*not to exceed amounts*) under RFP # 70-000-16-00013 for Educational Institutions and Libraries. This master contract is associated with E-rate **State Form 470 # 170046897**. If you notice an error, wish to request a quote, and/or need to add or change a service location, **please contact the awarded Provider directly.**

#### Quote Type Definitions

- ON-NET:** The Primary Contractor will be proposing a direct connection to On-Net Internet Access Services, which is *in the Primary Contractor's service area*. This excludes any fiber construction services and/or special construction.
- \*\*OFF-NET:** The Primary Contractor will be proposing a direction connection to Off-Net Internet Access Services, which is *outside of the Primary Contractor's service area*. This may include fiber construction services and/or special construction, and to meet the applicant's need, this may include the Offeror partnering with other providers.

### 2017 E-rate Costs

Your District's monthly cost per 100 Mbps: \$108

### 2017 Bandwidth per Month

Your District is paying for this amount of bandwidth per month: 10 Gbps

### 2017 District Bandwidth per Student

586.57 kbps

### 2017 District Technology Type

Fiber

### SPA Quotes by Address

\*\*A double asterisk represents "OFF-NET" services as described above.

Rio Rancho Public Schools, 500 Laser Rd NE, Rio Rancho, NM 87124

Provider Name	Monthly Not to Exceed Amounts by Bandwidth									
	100 Mbps	200 Mbps	500 Mbps	1 Gbps	2 Gbps	5 Gbps	10 Gbps	25 Gbps	50 Gbps	100 Gbps
**Windstream	\$1,090	\$1,431	\$3,641	\$6,028						

### Internet Service Providers (ISPs) in Your Area

\*\* A double asterisk below represents ISPs with an *active New Mexico Statewide Price Agreement (SPA)* for Internet access services. You may have an option to be added to one or more of these agreements which are intended to help control costs. *Please do not hesitate to contact any or all of these Providers for a quote.*

For the most current contact information, please use the following website links.

1. AT&T (<http://www.att.com/>)
  - o Mobile Wireless
2. \*\*CableONE (<http://www.cableone.net/>)
  - o Cable
3. CenturyLink (<http://www.centurylink.com/>)
  - o DSL, Fiber
4. Choice Wireless (<https://www.choice-wireless.com/>)
  - o Mobile Wireless
5. Cibola Wireless (<http://www.cibolawireless.net/>)
  - o Fixed Wireless
6. Comcast (<https://www.xfinity.com/>)
  - o Cable
7. Cricket Wireless (<https://www.cricketwireless.com/>)
  - o Mobile Wireless
8. Cyber Mesa Telecom (<http://www.cybermesa.com>)
  - o Copperwire
9. Earthlink Business (<https://www.earthlink.com/>)
  - o DSL
10. FastTrack Communications, Inc. (<http://fasttrackcomm.net/>)
  - o Fiber
11. GCI Communications, Corp. (<https://www.gci.com/>)
  - o Satellite
12. Global Capacity, LLC (<https://www.gtt.net/>)
  - o Copperwire, DSL
13. Hughes Net (<http://www.hughesnet.com/>)
  - o Satellite
14. Level 3 Communications, LLC (<http://www.level3.com/en/>)
  - o Copperwire, Fiber
15. Lobo Internet (<http://www.lobo.net/>)
  - o Fixed Wireless

16. MCI Communications, Inc.  
(<http://www.mci.com/mcihome.jsp>)
  - o Copperwire
17. McLeodUSA Telecommunications Services, LLC (<https://www.windstreambusiness.com/>)
  - o DSL, Fiber
18. Roadrunner Wireless  
(<http://roadrunnerwireless.com/>)
  - o Fixed Wireless
19. Skycasters (<http://www.skycasters.com/>)
  - o Satellite
20. Sprint (<https://www.sprint.com/>)
  - o Mobile Wireless
21. T-Mobile (<http://www.t-mobile.com/>)
  - o Mobile Wireless
22. Transworld Network, Corp.  
(<http://www.twncorp.com/>)
  - o Fixed Wireless
23. Verizon Wireless  
(<http://www.verizonwireless.com/b2c/index.html>)
  - o Mobile Wireless
24. ViaSat Inc. (<http://www.viasat.com/>)
  - o Satellite
25. \*\*Windstream  
(<https://www.windstream.com/>)
  - o DSL

### **Questions?**

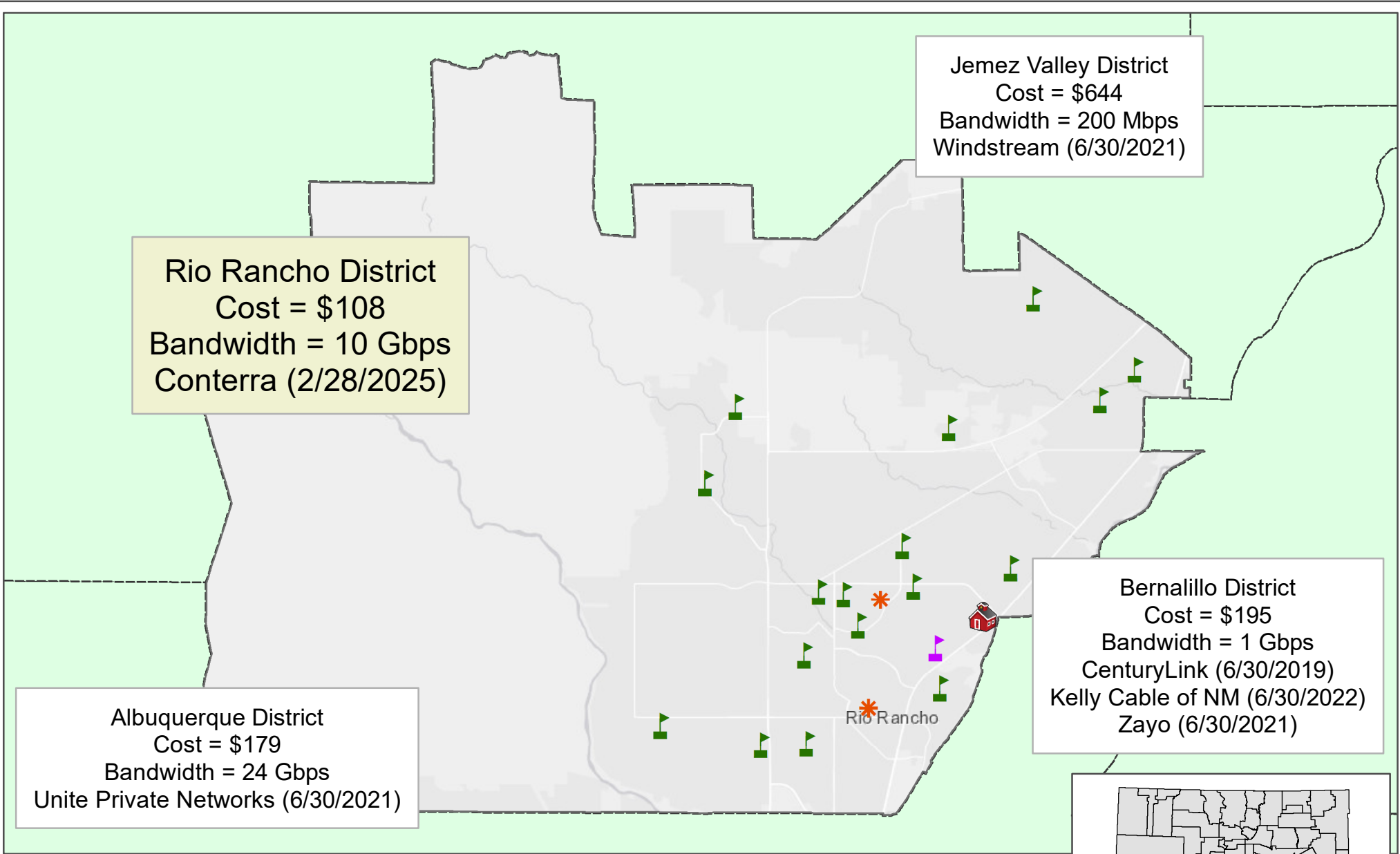
Please contact John Chadwick, State E-rate Coordinator, at the [New Mexico Public Education Department \(PED\)](#) via phone (505-827-6491) or email ([John.Chadwick@state.nm.us](mailto:John.Chadwick@state.nm.us)).

BB4E Contacts Webpage: <http://www.broadband4education.nm.gov/contact-us.aspx>

### **Data Sources**

The data for this report exists mostly through self-reporting mechanisms and may be somewhat outdated or incorrect, despite our best efforts to ensure accuracy.

- ◆ 2017 E-rate Data from the Universal Service Administrative Company (USAC)
- ◆ ISP Data from the Federal Communications Commission (FCC)
- ◆ E-rate Data from the NM Public Education Department (PED)
- ◆ 2017 E-rate Data Validated By EducationSuperHighway (ESH)
- ◆ Mapping Data from the NM Broadband Map; NM Department of Information Technology (DoIT) Office of Broadband & Geospatial Initiatives (OBGI)
- ◆ SPA Data from the NM State Purchasing Division (SPD), General Services Department (GSD)



District Internet Access Service Monthly Cost Comparison

# Rio Rancho Public Schools

- 2017 E-Rate monthly cost per 100 Mbps per District
- Total Bandwidth per Month per School District
- Internet Service Provider (Contract Expiration Date)

- District Office
- Public School
- Charter School
- Library
- School District

